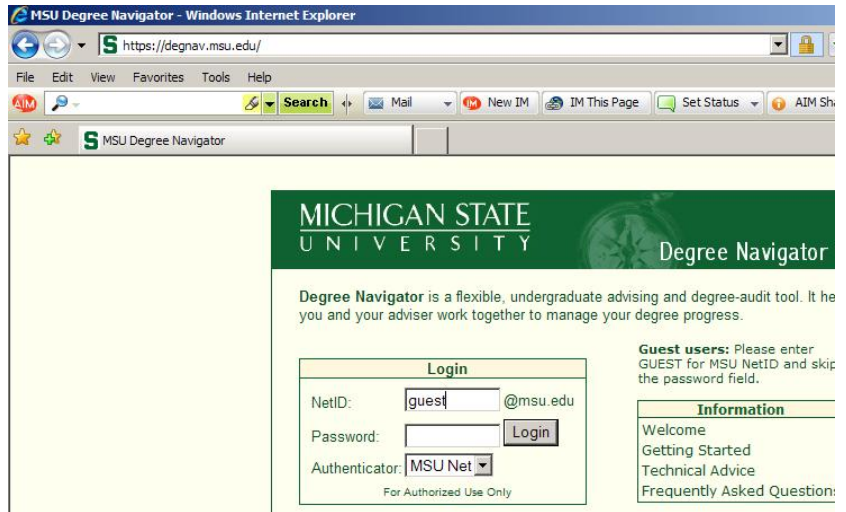


# The A, B, Cs of Taking Classes to Transfer to MSU

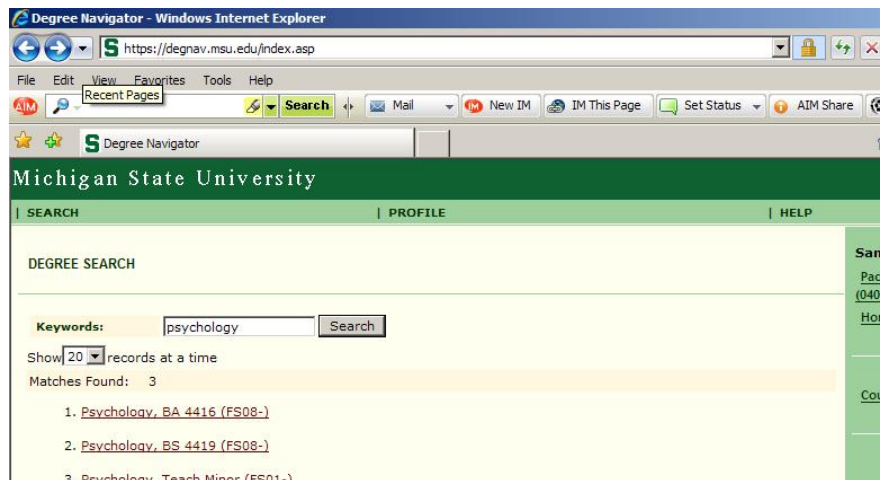
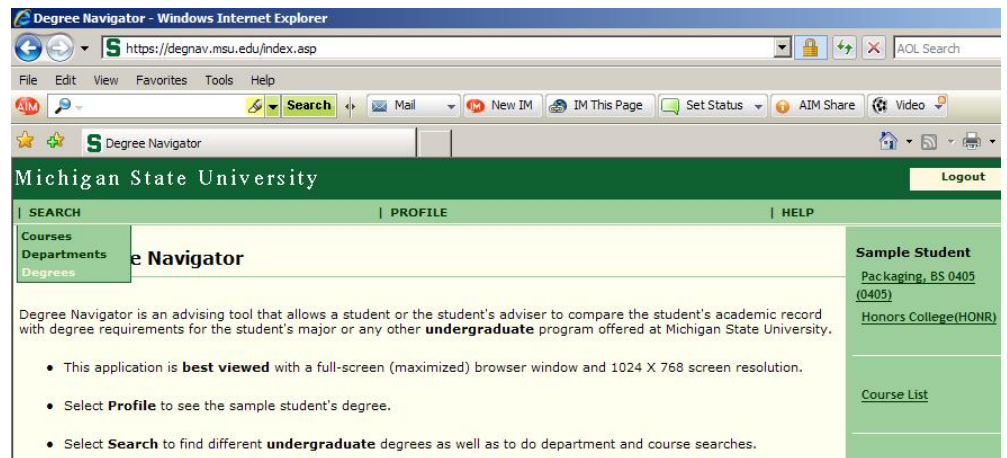
## A. Use MSU Degree Navigator

1. On MSU's webpage, search "degree navigator" (direct link is <https://degnav.msu.edu/> ).

2. Log in with ID as "guest" and password field blank.



3. On Degree Navigator, search for chosen major (click "Search" and then "Degrees").



4. Click on your preferred degree, and print the report. (It will be several pages long.)

Requirements 1 through 10 are general education requirements. Requirements 11 onward are requirements for that particular major.

Remember that either WRIT122 or ENGL122 is required for acceptance to MSU, as is MATH112 or higher, so make sure to take these. In addition to taking other general education courses (which would count for any major), also consider taking some classes from your proposed major (Requirement 11 onward).

No matter what, *protect your GPA!* If you have to repeat a class, then unlike LCC, MSU will include the repeat grade(s) *and* the original grade in calculating your GPA.

5. If you are interested in a highly competitive major like business, education, engineering, etc., use [http://admissions.msu.edu/admission/transfer\\_limitedEnrollment.asp](http://admissions.msu.edu/admission/transfer_limitedEnrollment.asp) to check minimum entrance requirements. These majors usually require significantly more coursework up front, along with a higher GPA.

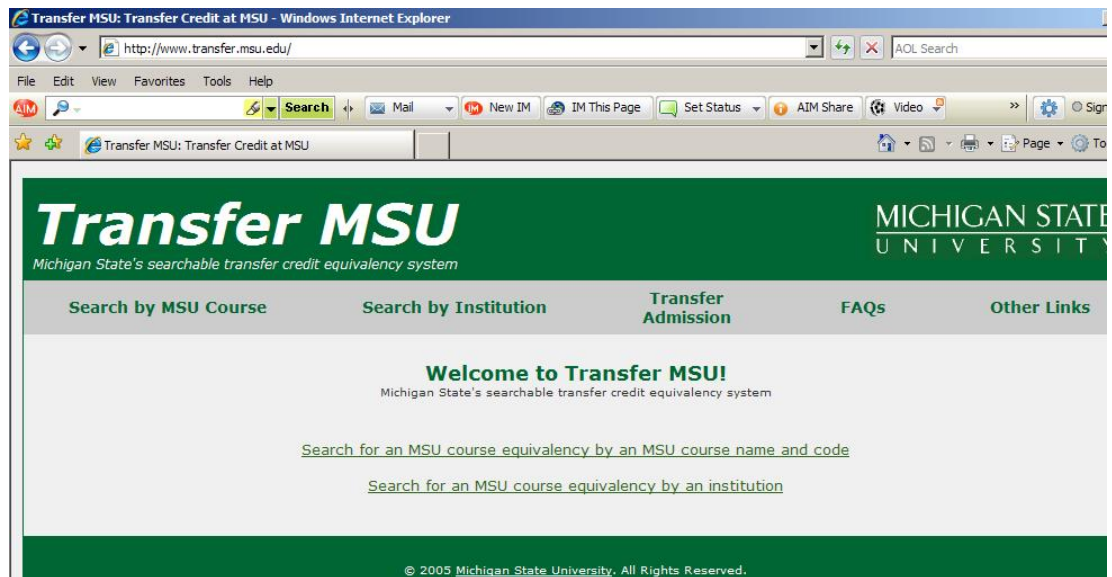
6. If still undecided on a major, follow MSU's general education requirements, called Integrative Studies: [http://admissions.msu.edu/admission/transfer\\_integrativeStudies.asp](http://admissions.msu.edu/admission/transfer_integrativeStudies.asp) and <http://admissions.msu.edu/transferguide/default.asp> .

Whichever guide you follow, notice that it lists the *MSU* courses required. To see what LCC courses can count, you will need to use the next website...

## **B. Check Transferability of LCC Courses to MSU**

7. When reading through a Degree Navigator report, use <http://www.transfer.msu.edu/> to see what LCC classes may satisfy the MSU requirements.

Use the link labeled "Search...by an MSU course name and code."



## **C. Check Major Department Webpage and Admissions Webpage at MSU**

8. Use <http://www.msu.edu/common/academic/units.html> to look up the webpage for the department of your chosen major. This webpage will have news, curricular guides, contact info for questions or for making an appointment, etc. (Just remember that department webpages may or may not be 100% updated.)

9. Also remember to study the transfer section of MSU's admissions webpage *thoroughly*: <http://admissions.msu.edu/admission/transfer.asp> .